

阅读申明

- 1.本站收集的数据手册和产品资料都来自互联网，版权归原作者所有。如读者和版权方有任何异议请及时告之，我们将妥善解决。
- 2.本站提供的中文数据手册是英文数据手册的中文翻译，其目的是协助用户阅读，该译文无法自动跟随原稿更新，同时也可能存在翻译上的不当。建议读者以英文原稿为参考以便获得更精准的信息。
- 3.本站提供的产品资料，来自厂商的技术支持或者使用者的心得体会等，其内容可能存在描述上的差异，建议读者做出适当判断。
- 4.如需与我们联系，请发邮件到marketing@iczoom.com，主题请标有“数据手册”字样。

Read Statement

1. The datasheets and other product information on the site are all from network reference or other public materials, and the copyright belongs to the original author and original published source. If readers and copyright owners have any objections, please contact us and we will deal with it in a timely manner.
2. The Chinese datasheets provided on the website is a Chinese translation of the English datasheets. Its purpose is for reader's learning exchange only and do not involve commercial purposes. The translation cannot be automatically updated with the original manuscript, and there may also be improper translations. Readers are advised to use the English manuscript as a reference for more accurate information.
3. All product information provided on the website refer to solutions from manufacturers' technical support or users the contents may have differences in description, and readers are advised to take the original article as the standard.
4. If you have any questions, please contact us at marketing@iczoom.com and mark the subject with "Datasheets" .



CUSTOMER	CUSTOMER'S P/N	GYE'S P/N	PRODUCT	REVISION
		SK12D01(07)V G4/042	拨动开关	A

1、概述

GENERAL

1.2 适用范围

APPLICATION

此规格书适用于机械式轻触开关的相关要求

This specification is applied to the requirements for TACTILE SWITCH (MECHANICAL CONTACT)

1.3 工作温度范围

Operating Temperature Range

-16℃~65℃(在标准大气压、标准湿度条件下)

-16℃~65℃ (Normal humidity, normal air pressure)

1.4 贮藏温度范围

Storage Temperature Range

-20℃~70℃(在标准大气压、标准湿度条件下)

-20℃~70℃ (Normal humidity, normal air pressure)

1.5 测试条件

Test Conditions

在没有其它特定的条件下，应该在以下的条件下进行测试和测量：

Unless otherwise specified, tests and measurement shall be made in the following standard conditions:

常温.....5℃~35℃

Normal temperature.....5℃~35℃

标准湿度.....相对湿度 45%~85%

Normal humidity.....relative humidity 45%~85%

标准大气压.....86KPa~106Kpa

Normal air pressure.....86Kpa~106Kpa

在制造过程中，测试和测量应该在以下的条件下进行：

If any doubt arise from the judgment, tests shall be conducted at the following conditions:

温度.....20℃±2℃

Temperature.....20℃±2℃

相对湿度.....65%±5%

Relative humidity.....65%±5%

环境气压.....86KPa~106Kpa

Air pressure.....86KPa~106Kpa

APPROVE BY	Jack Wu	CHECKED BY	孙斌	PRPARE BY	徐明娥
------------	---------	------------	----	-----------	-----



GANGYUAN

APPROVAL SPECIFICATIONS

CUSTOMER	CUSTOMER' S P/N	GYE' S P/N	PRODUCT	REVISION
		SK12D01(07)V G4/042	拨动开关	A

2、 详细说明

Detailed specification

2.1 外观：应无影响、降低产品性能的缺陷；

Appearance: There should be no defects that affect the serviceability of product.

2.2 结构尺寸和安装尺寸：应符合装配图要求；

Style and dimension: shall conform to the assemble drawings.

2.3 操作形式：有触觉反应的操作

Type of actuating: Tactile feedback.

2.4 开关工作额定值：DC 12V , 0.5A (有效值)

Ratings: 12V DC, 0.5A (effective value)

3 . 电气性能：

ELECTRICAL SPECIFICATION

项 目 ITEM		试 验 条 件 TEST CONDITIONS	要 求 REQUIREMENTS		
1	接触电阻 Contact Resistance	在以 1KHz/ 100mA 的微小电流下测试 1KHz MEASURED ATSMALL CURRENT (100mA OR LESS)	≤100mΩ		
2	绝缘电阻 Insulation Resistance	APPLY A VOLTAGE OF 500V DC SHALL BE APPLIED FOR 1 MIN AFTER WHICH MEASUREMENT BE MADE : (1) BETWEEN TERMINALS. (2) BETWEEN INDIVIDUAL TERMINALS AND FRAME 输入 500V DC 电压 1 分钟,按以下接触方法测试: (1) 排脚相互之间. (2) 排脚与外壳之间	≥100MΩ		
3	DIELECTRIC STRENGTH 耐电压	AC 500V rms (50-60HZ) FOR 1 MIN TRIP CURRENT: 0.5mA (1) BETWEEN TERMINALS. (2) BETWEEN INDIVIDUAL TERMINALS AND FRAME. 输入 AC 500V(50-60Hz)电压,1 分钟感度电流为 0.5mA,按以下接 触方法测试: (1) 排脚相互之间. (2) 排脚与外壳之间	WITHOUT DAMAGE TO PARTS ARCING OR BREAKDOWN, ETC. 没有绝缘破坏等异常.		
APPROVE BY	Jack Wu	CHECKED BY	孙斌	PRPARE BY	徐明娥



GANGYUAN

APPROVAL SPECIFICATIONS

CUSTOMER	CUSTOMER'S P/N	GYE'S P/N	PRODUCT	REVISION	
		SK12D01(07)V G4/042	拨动开关	A	
项目 ITEM	试验条件 TEST CONDITIONS		要求 REQUIREMENTS		
5. MECHANICAL CHARACTERISTICS (机械性能规格)					
5.1	OPERATING FORCE 作动力	MEASUREMENT SHALL BE MADE AT THE NEAREST POINT OF THE COMPONENT OR AT THE POINT 3mm FROM THE TIP OF THE ACTUATOR (KNOB). 在距离胶柄前端 3mm 作测定点.	200gf ± 80gf		
5.2	TERMINAL STRENGTH 端子强度	A STATIC LOAD OF 300gf SHALL BE APPLIED TO THE TERMINAL FOR 15 SEC .IN ANY DIRECTION 在排脚前端任意一个方向加 300gf 力度测试,时间为 15 秒.	ELECTRICAL CHARACTERISTICS SHALL BE SATISFIED WITHOUT DAMAGE OR EXCESSIVE LOOSENESS OF TERMINALS. 在排脚中没有裂开,松动等异常,满足于机械、电器性能.		
5.3	DISPLACEMENT OF ACTUATOR (KNOB) 柄强度	A STATIC LOAD OF 10 N(1Kgf)SHALL BE APPLIED TO THE TOP OF THE ACTUATOR (KNOD) AND THEN DISPLACEMENT SHALL BE MEASURED TO THE DIRECTION OF THE ARROW. 在柄的前端施加 1Kgf 的力度,位移应沿印记的方向上定.	THE LEVER SHALL HAVE NO SERIOUS DEFORMATION AND FUNCTION NORMALLY. 柄部无严重变形,可以正常工作.		
6. ENDURANCE CHARACTERISTICS (耐久性):					
6.1	LIFE TEST 寿命试验	ENDURANCE WITHOUT LOADING: A SWITCH SHALL BE SUBJECTED TO 10,000 CYCLES AT A SPEED OF 15 TO 18 CYCLES PER MINUTE WITHOUT LOADING. 无负荷: 在无负荷的条件下以每分钟 15~18 回的速度进行 10,000 次的测试.	(1) CONTACT RESISTANCE (接触电阻)150m Ω MAX. 150 毫欧以下. (2) INSULATION RESISTANCE(绝缘电阻)50MΩ MIN. 50 兆欧以上. (3) WITHSTAND VOLTAGE(耐电压) AC 500V,1 MINUTE.AC 500V 1 分钟 (4) OPERATING FORCE(作动力) ± 30% INITIAL VALUE. 变化范围初始值 ± 30%. (5) WITHOUT DAMAGE TO PARTS ARCING OR BREAKDOWN ETC.(测试后外表无损伤,并且满足机械性能)		
APPROVE BY	Jack Wu	CHECKED BY	孙斌	PRPARE BY	徐明娥



GANGYUAN

APPROVAL SPECIFICATIONS

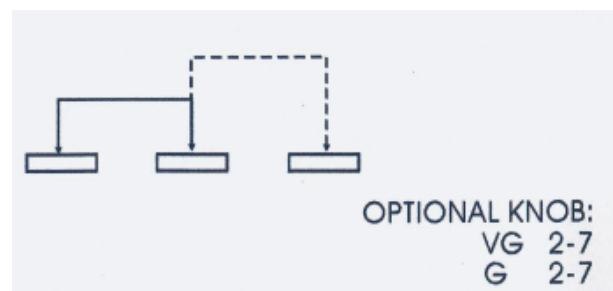
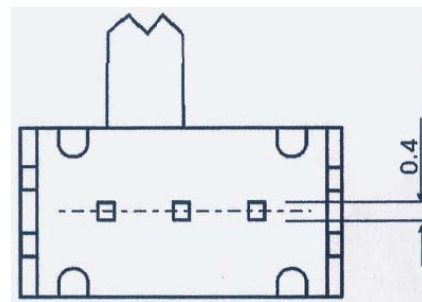
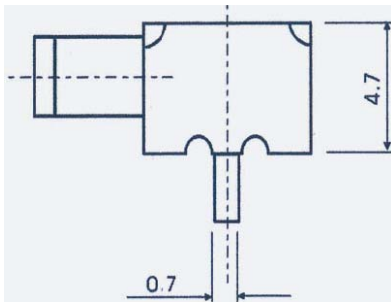
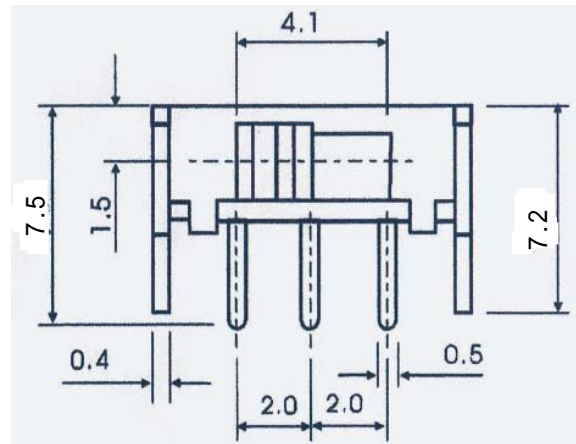
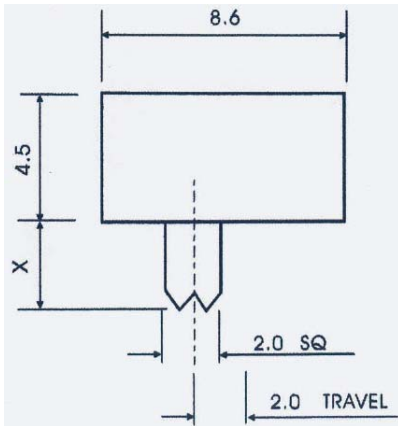
CUSTOMER		CUSTOMER'S P/N	GYE'S P/N	PRODUCT	REVISION	
			SK12D01(07)V G4/042	拨动开关	A	
项目 ITEM		试验条件 TEST CONDITIONS			要求 REQUIREMENTS	
6.2	SOLDERABILITY TEST 可焊性试验	THE TOP OF THE TERMINALS SHALL BE DIPPED 2mm IN THE SOLDER BATH OF 190±10℃ FOR 2±0.5 SECONDS. 端子顶部被浸入锡焊池中 2mm 深,温度为 190±10℃,时间为 2±0.5 秒.			THE AREA OF SOLDERING. SHOULD BE OVER 75%. 焊接面积要有 75%以上.	
6.3	RESISTANCE TO SOLDERING HEAT TEST 耐焊性试验	SOLDER BATH METHOD: SOLDER TEMPERATURE 200 ± 10 °C IMMERSION TIME 2 ± 0.5 SEC IMMERSION DEPTH UP TO THE SURFACE OF THE BOARD THICKNESS OF PRINTED WIRING BOARD 1.6mm DIMENSIONS OF COMPONENT HOLES IN THE PRINTED WIRING BOARD SHALL BE ACCORDANCE WITH THOSE SPECIFIED IN THIS SPECIFICATION. 焊炉焊接的时候温度控制在 200±10℃,过炉时间 2±0.5 秒,于(基板)厚度为 1.6mm.			WITHOUT DEFORMATION OF CASE OR EXCESSIVE LOOSENESS OF TERMINALS ELECTRICAL CHARACTERISTICS SHALL BE SATISFIED. 本体无变形,能满足于机械、电器性能.	
6.4	COLD TEST 耐冷试验	THE SWITCH SHALL BE STORED AT A TEMPERATURE OF -25 ± 3 °C FOR 48 HOURS. THEN THE SWITCH SHALL BE MAINTAINED AT STANDARD ATMOSPHERIC CONDITIONS FOR 1 HOUR AFTER WHICH MEASUREMENT SHALL BE MADE. 放置在温度 -25±3℃中 48 小时后,再放置常温常湿中 1 小时来进行测试.			THERE SHALL BE NO DEFORMATION OR CRACKS IN MOLDED PART. 外观无异常,满足于机械、电器性能.	
6.5	HEAT TEST 耐热试验	THE SWITCH SHALL BE STORED AT A TEMPERATURE OF 70 ± 2 °C FOR 48 HOURS. THEN THE SWITCH SHALL BE MAINTAINED AT STANDARD ATMOSPHERIC CONDITIONS FOR 1 HOUR AFTER WHICH MEASUREMENT SHALL BE MADE. 放置在温度 70±2℃中测试 48 小时后,再放置正常室温中 1 小时来测定.				
6.6	HUMIDITY TEST 潮湿试验	THE SWITCH SHALL BE STORED AT A TEMPERATURE OF 40 ± 2 °C AND A HUMIDITY OF 90% TO 95% FOR 96 HOURS. THEN THE SWITCH SHALL BE MAINTAINED AT STANDARD ATMOSPHERIC CONDITION FOR 1 HOUR AFTER WHICH MEASUREMENT SHALL BE MADE. 放置 40±2℃的相对湿度为 90%-95%环境中 96 小时后,再将样板放在正常环境 1 小时后进行测试.			THERE SHALL BE NO DEFORMATION OR CRACKS IN MOLDED PART. 外观无异常,满足于机械、电器性能.	
APPROVE BY		Jack Wu	CHECKED BY	孙斌	PREPARE BY	徐明娥



GANGYUAN

APPROVAL SPECIFICATIONS

CUSTOMER	CUSTOMER'S P/N	GYE'S P/N	PRODUCT	REVISION
		SK12D01(07)V G4/042	拨动开关	A
项目 ITEM	试验条件 TEST CONDITIONS		要求 REQUIREMENTS	



eral tolerance: $\pm 0.2\text{mm}$

$H=4 \pm 0.2\text{mm}$

NO.	NAME	MATERIAL	FINISHING
1	SPRING	SUS	TEMPER
2	CAM STICK	SUS	NATURAL
3	TNSERT CASE	NYLON+F.G/BRASS STRIP	GREY/Ag PLATED OVER Ni PLATED
4	COVER	POM	BLACK/WHITE
5	INSERT KNOB	POM/PBS C5210R-EH	WHITE/Ag CLAD

APPROVE BY	Jack Wu	CHECKED BY	孙斌	PRPARE BY	徐明娥
------------	---------	------------	----	-----------	-----